



From the Principal's desk



including Headspace, Lifeline and Beyond Blue. Please touch base if you feel support is required or you need to talk.

A reminder that in order to keep up with learning at SCSODE, you need to submit one learning activity per subject, per week unless otherwise instructed. These learning activities are designed to be one week's worth of learning and is required to keep up with the course requirements and ensure that you have every possible chance of performing at your best. To compliment this, revision and attendance at the live lessons are recommended along with attendance at the Hub or Outreach if provided. This will give you every opportunity to succeed.

If you have any questions relating to your child's learning or learning needs, please contact the front office for an appointment with one of our teaching staff or executive members.

Yours in Education,

Danny Henman

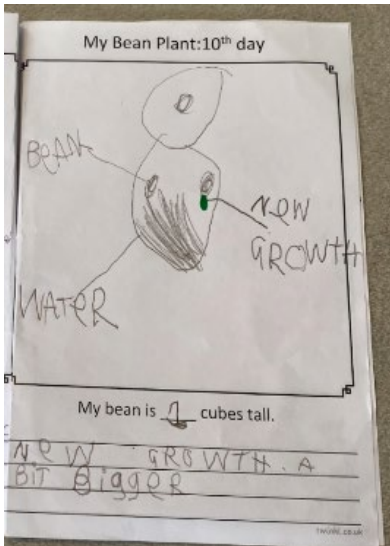
We have been very busy following all of the events of late, attempting to catch up, follow up and keep up with the demands of teaching and learning within the school. We have had some recent sad news related to the school and I would ask all parents to check on your children, ask how they are doing and ensure that supports are in place should they be required. Following on from the flood events, COVID, bushfires and the drought, there is some need to ensure our young people, students, their friends as well as ourselves are okay. There are many supports out there



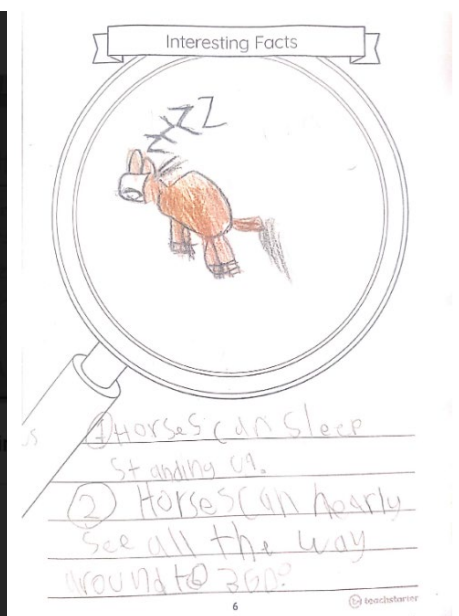
Primary News

Primary students have just finished their study about the Living World.

Early Stage 1 students have enjoyed exploring what plants need to survive and watching their plants grow. They have also been creatively engaging in art by recreating Van Gogh's sunflower art.



Stage 1 students have also been learning about and recreating Van Gogh's sunflower art. They have also been creating some wonderful information texts, full of interesting facts about animals.



Stage 2 students have been helping build Atto the Alien's library by creating some books about living things. Our travellers have also had some great opportunities to get up close and personal with some living things!



Stage 3 students have been exploring how living things adapt and survive in their environment. They have made some detailed 3D sculptures of living things and created and described new species of animals by mixing and matching different features of familiar animals.



Have you ever seen an animal as beautiful as the Cheatsnake Lizard?

The Cheatsnake Lizard can produce deadly venom.

The Cheatsnake Lizard can camouflage easily to its environment due to its colouring.



The Cheatsnake Lizard has a whip like tail for balance and protection.

The Cheatsnake lizard can run up to 80 to 130km/h.



Contingent Psychology Services

Information for Primary Parents

Let your
Class Teacher
know if you are
interested

This term, in addition to having our regular school counsellor we have an extra psychologist available on a temporary basis available through tele-counselling.

Contingent Psychology Services are registered psychologists contracted by the Department of Education through approved external providers. Contracted psychologists may work in schools on a temporary basis.

This contingent service is to support students who have been flood impacted or who are experiencing difficult times.

Psychology services provided by contingent staff may be delivered through tele-counselling or a phone for students.

What is it?

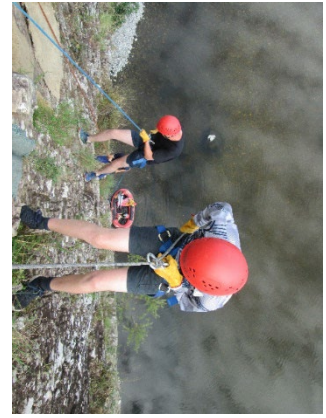
The psychologist will provide a confidential service to assist students. Supports that can be offered include counselling therapeutic interventions. Counselling can assist with school, social, family or other problems that the student may be facing.

How does it help?

Talking to a psychologist can be incredibly helpful. The psychologist can work with students to explore issues and concerns that are important to them and assist you and the student to connect with people in your area who can help.

How does it work?

Schools who are accessing Contingent Psychology Services will follow their regular student wellbeing referral processes.



Southern Cross School of Distance Education

School Camp Postponed until

Term 3 Week 8

6 – 9 September 2022

Buccarumbi

Contact the PDHPE Faculty for more information

66 810 341



School and community news

Work Experience Summerland House



Year 12 student Zoe Bateman is currently undertaking work experience at Summerland House. Zoe has already completed her second day and she is excited about the way she can use the skills that she has developed from previous experiences in an automotive workplace and a café, as well as her experiences growing up on a farm. Zoe is currently working in the farm section at Summerland House, and she is enjoying working outdoors in such a positive workplace.

Summerland House were very welcoming and were only too willing to provide experiences to fit Zoe's interests. This work compliments Zoe's work in Work and Community studies as well as her other subjects and learning gained in her prior TAFE course. In addition, Zoe has been volunteering at an Op shop for four years which has recently involved her assisting to deliver furniture to flood affected households.

Zoe has progressed towards her provisional licence, and she is keen to undertake further training to complement her workplace skills.

Zoe is keen to develop her work skills to assist her transition into full time work once she completes her HSC, preferably at Summerland House where, as Zoe said "there are so many opportunities to develop my skills and interests".



Avocados picked by Zoe at the farm at Summerland House

Through droughts and flooding

A huge thankyou to SRC Students at Coonabarabran High School

Students in the SRC at Coonabarabran High School were so moved by the hardship experienced in the recent floods that they took it upon themselves to organise a fundraiser for Cabbage Tree Island School.



Students organised a school mufti-day and collected funds to purchase vouchers supported by SRC co-ordinator Kathryn Christoff. Coonabarabran has been through major drought and mice plagues in recent times and felt for the students at Cabbage Tree Island.

Teacher Shannon Johnston who previously worked at Ballina High School and taught past students from Cabbage Tree Island explained the unique place in Bundjalung country that Cabbage Tree Island is located in and its amazing history and importance to the local community. The vouchers were gratefully accepted by the Principal of Cabbage Tree Island, Dyonne Anderson who will contact Coonabarabran High School to thank the students for this amazing gesture. Thanks also to Mary Doolan the Principal at Coonabarabran for the support from the school community.



SRC students on Mufti Day after collecting money

Attention all students of SCSODE



Year 10 Geographers need your help!

We are after high school aged people to complete our short survey on Youth Wellbeing.

The results will be used by Year 10 Geography students to complete an assessment task.

Our research will be more meaningful and valid the more surveys we have completed.

Here is the link: <https://forms.gle/E7iT12tmvcFJmNMZ6>

Thanks in advance for your contribution to our research 😊

HSIE Faculty



Bonds Clothing to share

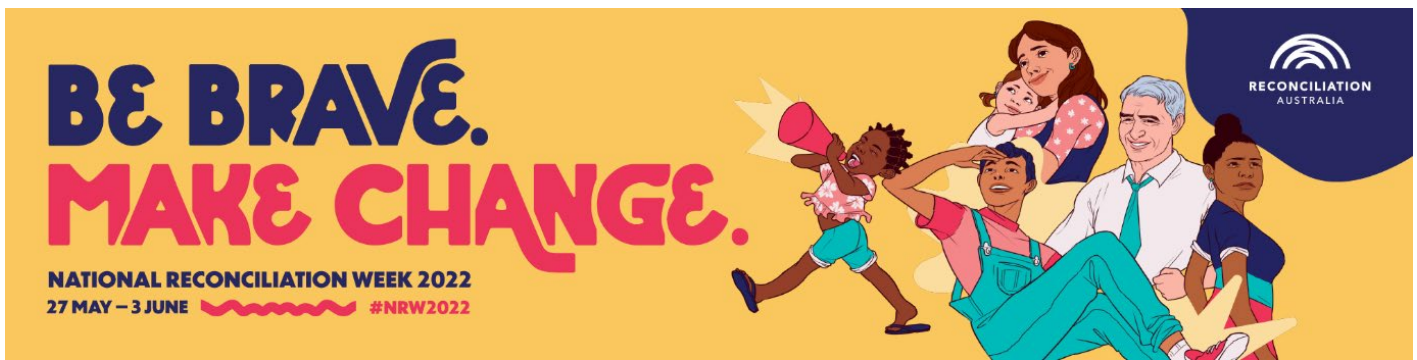
A kind donation from the GIVIT charity has arrived at school

Clothing from Bonds including: bras, underwear, kidswear, tracksuits, active wear, hoodies and T-Shirts.



If you would like to receive any items, contact your HT Enrolment/Welfare or your Stage Adviser

all students & families are eligible, but priority is for those impacted through floods.



This year's National Reconciliation Week theme is "Be Brave. Make Change." It is a challenge to individuals, families, communities, organisations, businesses, schools and government to be brave and tackle the unfinished business of reconciliation so we can make change for the benefit of all Australians.

National Reconciliation Week—27 May to 3 June—is a time for all Australians to learn about our shared histories, cultures, and achievements, and to explore how each of us can contribute to achieving reconciliation in Australia.

Reconciliation is an ongoing journey that reminds us that while generations of Australians have fought hard for meaningful change there is still so much to do. This year we celebrate significant national anniversaries of brave actions.

50 years ago: In January 1972, a group of brave young men began the longest protest for Indigenous land rights, sovereignty, and self-determination by planting a beach umbrella and signage proclaiming the Aboriginal Embassy across the road from (then) Parliament House in Canberra.

30 years ago: In June 1992, the ten-year fight of a group of Torres Strait Islanders, led by Eddie Mabo, over ownership of Mer (Murray Island) resulted in a High Court decision that recognised that Aboriginal and Torres Strait Islander peoples have rights to land – Native Title rights that existed before the British arrived and can still exist today.

30 years ago: On 29 May 1992 the Torres Strait Islander Flag was officially presented to the people of the Torres Strait Islands at the sixth Torres Strait Cultural Festival

25 years ago: In April 1997 the Stolen Generations Report of the National Inquiry into the Separation of Aboriginal and Torres Strait Islander Children from Their Families was released, a testament to the bravery of thousands who told of the impact of forcible removal from their families, cultures and communities

Actions to make change

- Tell the truth on racism
- Acknowledge Country
- Get your facts first-hand
- Fight for justice
- Own our history of colonisation
- Practise reconciliation in schools
- Learn your local history
- Support self-determination
- Be a brave ally
- Prioritise cultural safety
- Support Blak business
- Stop cultural theft
- Embed reconciliation in the workplace
- Support political reforms and representation
- Speak up for languages
- Support the teaching of First Nations' history
- Stand up for land rights
- Care for Country

For more information, activities and resources see: <https://nrw.reconciliation.org.au/>

Take on the challenge!

National Sorry Day

May 26 is National Sorry Day. This day remembers the Stolen Generation and acknowledges the mistreatment of Aboriginal and Torres Strait Islander peoples through colonisation. The Stolen Generation were forcibly removed from their families and communities with the goal of assimilation.

The first Sorry Day was held in 1998, 12 months after the report known as “Bringing them Home” was presented in parliament. This report recommended an unreserved apology be made to Aboriginal and Torres Strait Islanders, especially those who were part of the Stolen Generation, acknowledging the ongoing trauma this policy brought about.

Sorry Day highlights the strength of the Stolen Generation survivors and focuses on how all Australians can be part of the healing process for the nation and all its peoples.

The Department of Education will screen a video at 9.30am for Sorry Day on Thursday 26 May:

Video and Q&A with Coota Girls Aboriginal Corporation

This video starts with the screening *Walking Our Songlines* followed by a Q&A session at the end with the Stolen Generations survivors and decedents. Survivors will be onsite at Coota Girls Home for the recording.

**BE
BRAVE.
MAKE
CHANGE.**

**NATIONAL
RECONCILIATION
WEEK 2022**



START YOUR PROJECT TODAY!

Recycled Art Competition

#OnlyOneEarth

The theme for this year to enable cleaner, greener, and sustainable living in harmony with nature.

Using only recycled materials let your imagination run wild make a sculpture, collage or diorama!

Lots of great prizes to be won! Entries to be received by June 3rd!



World Environment Day 7th June 2022

Save the Date!

10am-2pm

Come along and participate in our sustainability workshops

#OnlyOneEarth

is the theme for this year calling for transformative changes to policies and choices to enable cleaner, greener, and sustainable living in harmony with nature.



Southern Cross
SCHOOL OF DISTANCE EDUCATION

Secondary News

Featuring Technology faculty

Celebrating innovation in learning:

Innovation in education encourages students and teachers to research, explore, and use all the tools to uncover and learn new information. At Southern Cross School of Distance Education, we have many innovative technologies used to encourage learning and engage with interactive platforms.

Over the last few years our school has increased our online learning tools, and this helped to keep continuity during the COVID lockdowns and floods.

Our Canvas/Tech Team have specialist skills that can assist you to access our online learning, you can call us directly with any problems or questions on 02 6681 0424.

Tips for students with their technology:

Southern Cross School of Distance Education uses a program called “Canvas” to host online learning courses. Canvas is a way to simplify teaching and learning by connecting all the digital tools teachers and students use in one easy place.

It is recommended that a computer with a reasonable size screen and keyboard is used by students to complete their work online. Canvas is accessible on all devices and has a mobile app for both IOS and Android to be used for quick access and checking notifications.

Basic Computer Specifications

This is a list of basic computer system requirements to use Canvas. It is recommended to use a computer five years old or newer that supports the most recent browser versions. Canvas will still run with the minimum specifications indicated below, but you may experience slower loading times.

- Computer Speed and Processor
 - Use a computer that is less than 5 years old when possible
 - 4GB of RAM
 - 2GHz processor
- Internet Speed
 - Minimum of 1Mbps download speed- A speed test can be run to check this.
<https://www.speedtest.net/>
 - You will find that certain functions like watching videos and using Microsoft Teams will be affected by low internet speeds. Upload speeds will also affect the time taken for large file types like video and audio files to be uploaded.
- Other features
 - Microphone either built in or using a headset
 - Webcam
 - All new laptop computers will have both a microphone and webcam built in.

Supported Browsers

At Southern Cross School of Distance Education, we recommend using the following browsers as they support all Canvas features:

- Chrome, Firefox

These are free to download from:

- <https://www.google.com/chrome/>
- <https://www.mozilla.org/en-US/firefox/>

NOTE: For Mac users Safari has security settings that can prevent images or multimedia content from displaying correctly. For that reason, it is recommended for students not to use Safari and to use Chrome or Firefox (see above links). You should always use the most current version of your preferred browser. For the latest list of supported browsers go to <https://community.canvaslms.com/docs/DOC-10720-67952720329>

Celebrating diversity:

Our school community is diverse in the technology it uses so where possible teachers of online courses will have documents in Canvas available in both Word (.docx) or PDF (.pdf) format. See below for how to access your free Microsoft Office 365 and Adobe (Years 7-12 only) products to assist with using these types of file formats.

If a student needs access to an alternative file format they are to contact their course teacher. Only Word or pdf files are to be uploaded by students for assignments in Canvas.

Student Software Downloads

All NSW Department of Education students are eligible for Microsoft software for the duration of their enrolment. The software is only available to download onto personally owned devices.

Microsoft

- Students access via their student portal- <http://portal.det.nsw.edu.au>
- Select Microsoft Office 365 from the Launchpad and following instructions to download

All NSW Department of Education Students in Year K-6 can only access free Adobe program via a school owned device.

All NSW Department of Education Year 7-12 students can access Adobe for the duration of their enrolment. The software is only available to download via the student portal.

Adobe

- Go to <http://creativecloud.adobe.com.au>
- Select sign in and enter your department of education email
- Select option for company or school account
- Enter portal username and password

Finding help:

Southern Cross School of Distance Education has a website with an Online Learning tab. In the Online Learning tab there are some great videos to help with logging onto Canvas and online learning:

- How to access Canvas
- What is Canvas
- Tips for online learning
- How to check your marks and teacher feedback
- How to submit work
- How to take a photo of your work and submit
- How to set up your notifications and email
- 'Turnitin' for checking your referencing and citations in assignments.
- Student digital literacy support

Remember:

For further assistance please contact the Canvas/Tech Team on: 02 6681 0424



JASON



DANIELLE



TIM



TRISH



Southern Cross

SCHOOL OF DISTANCE EDUCATION



MATT



MARY-ANNE



ROSS

CONTACT US:
☎ 02 6681 0424



southerncrossschoolofdistanceeducation@det.nsw.edu.au



<https://sthecrossc-d.schools.nsw.gov.au/>

Careers

Do you want to learn new skills for the workplace? Then try one of these great courses.



- White Card – required if wanting to work in the construction industry
- Barista – hospitality workers are in demand!
- First Aid – Save a Life with First Aid - useful in any job!
- Responsible Service of Alcohol - RSA (senior students)
- Responsible Conduct of Gambling – RCG (senior students)

The school can arrange these courses which will be delivered by external organisations. Training dates are yet to be determined.

Students are asked to make a small contribution to the cost.

If you have any questions regarding these training courses, please speak to your Year Adviser or contact Graeme Chapman on 66810437



NORTHERN RIVERS

Careers Expo



Exhibitors Include:

- Apprenticeship Groups
- Community Organisations
- Defence Forces
- Emergency Services
- Employers
- Employment Agencies
- Gap Year Opportunities
- Government Agencies
- Industry Associations
- Tertiary Education
- Training Organisations
- TRY A TRADE
- Universities
- Volunteering Groups
- Youth Organisations
- Jobs Board

FREE Entry

SAVE THE DATE

Tuesday 26 July 2022

The Lismore Showgrounds 9 am – 3 pm



Contingent Psychology Services

Information for Years 7-12

Let your
Student Adviser
know if you are
interested

This term, in addition to having our regular school counsellor we have an extra psychologist available on a temporary basis available through tele-counselling.

This is to support students who have been flood impacted or who are experiencing difficult times.

What can I
expect?

The psychologist will offer a confidential counselling service that can assist you when you are down or are having a difficult time.

How does it
help?

Talking to someone can be really helpful. The psychologist can work with you to explore issues and concerns that are important to you and assist to connect you with people in your area who can also help.

When using tele-counselling some things to know are:

Setting up

- Student Adviser will inform you that you have an upcoming tele-counselling appointment.
- An appointment can also be conducted over the phone.

What to expect

- Sessions will be approximately 30-45 minutes but if you need a break at any time, please let the psychologist know

When you are finished

- At the end of the session, if you need a little more assistance or time let your student adviser (or Hub or Outreach or project) know.




Calendar 2022

January	February	March	April																																																																																																																																																																															
<table border="1"> <tr><th>S</th><th>M</th><th>T</th><th>W</th><th>T</th><th>F</th><th>S</th></tr> <tr><td>30</td><td>31</td><td></td><td></td><td></td><td></td><td>1</td></tr> <tr><td>2</td><td>3</td><td>4</td><td>5</td><td>6</td><td>7</td><td>8</td></tr> <tr><td>9</td><td>10</td><td>11</td><td>12</td><td>13</td><td>14</td><td>15</td></tr> <tr><td>16</td><td>17</td><td>18</td><td>19</td><td>20</td><td>21</td><td>22</td></tr> <tr><td>23</td><td>24</td><td>25</td><td>26</td><td>27</td><td>28</td><td>29</td></tr> </table>	S	M	T	W	T	F	S	30	31					1	2	3	4	5	6	7	8	9	10	11	12	13	14	15	16	17	18	19	20	21	22	23	24	25	26	27	28	29	<table border="1"> <tr><th>S</th><th>M</th><th>T</th><th>W</th><th>T</th><th>F</th><th>S</th></tr> <tr><td></td><td></td><td>1</td><td>2</td><td>3</td><td>4</td><td>5</td></tr> <tr><td>6</td><td>7</td><td>8</td><td>9</td><td>10</td><td>11</td><td>12</td></tr> <tr><td>13</td><td>14</td><td>15</td><td>16</td><td>17</td><td>18</td><td>19</td></tr> <tr><td>20</td><td>21</td><td>22</td><td>23</td><td>24</td><td>25</td><td>26</td></tr> <tr><td>27</td><td>28</td><td></td><td></td><td></td><td></td><td></td></tr> </table>	S	M	T	W	T	F	S			1	2	3	4	5	6	7	8	9	10	11	12	13	14	15	16	17	18	19	20	21	22	23	24	25	26	27	28						<table border="1"> <tr><th>S</th><th>M</th><th>T</th><th>W</th><th>T</th><th>F</th><th>S</th></tr> <tr><td></td><td></td><td></td><td>1</td><td>2</td><td>3</td><td>4</td></tr> <tr><td>5</td><td>6</td><td>7</td><td>8</td><td>9</td><td>10</td><td>11</td></tr> <tr><td>12</td><td>13</td><td>14</td><td>15</td><td>16</td><td>17</td><td>18</td></tr> <tr><td>19</td><td>20</td><td>21</td><td>22</td><td>23</td><td>24</td><td>25</td></tr> <tr><td>26</td><td>27</td><td>28</td><td>29</td><td>30</td><td>31</td><td></td></tr> </table>	S	M	T	W	T	F	S				1	2	3	4	5	6	7	8	9	10	11	12	13	14	15	16	17	18	19	20	21	22	23	24	25	26	27	28	29	30	31		<table border="1"> <tr><th>S</th><th>M</th><th>T</th><th>W</th><th>T</th><th>F</th><th>S</th></tr> <tr><td></td><td></td><td></td><td></td><td></td><td></td><td>1</td></tr> <tr><td>2</td><td>3</td><td>4</td><td>5</td><td>6</td><td>7</td><td>8</td></tr> <tr><td>9</td><td>10</td><td>11</td><td>12</td><td>13</td><td>14</td><td>15</td></tr> <tr><td>16</td><td>17</td><td>18</td><td>19</td><td>20</td><td>21</td><td>22</td></tr> <tr><td>23</td><td>24</td><td>25</td><td>26</td><td>27</td><td>28</td><td>29</td></tr> <tr><td>30</td><td>31</td><td></td><td></td><td></td><td></td><td></td></tr> </table>	S	M	T	W	T	F	S							1	2	3	4	5	6	7	8	9	10	11	12	13	14	15	16	17	18	19	20	21	22	23	24	25	26	27	28	29	30	31					
S	M	T	W	T	F	S																																																																																																																																																																												
30	31					1																																																																																																																																																																												
2	3	4	5	6	7	8																																																																																																																																																																												
9	10	11	12	13	14	15																																																																																																																																																																												
16	17	18	19	20	21	22																																																																																																																																																																												
23	24	25	26	27	28	29																																																																																																																																																																												
S	M	T	W	T	F	S																																																																																																																																																																												
		1	2	3	4	5																																																																																																																																																																												
6	7	8	9	10	11	12																																																																																																																																																																												
13	14	15	16	17	18	19																																																																																																																																																																												
20	21	22	23	24	25	26																																																																																																																																																																												
27	28																																																																																																																																																																																	
S	M	T	W	T	F	S																																																																																																																																																																												
			1	2	3	4																																																																																																																																																																												
5	6	7	8	9	10	11																																																																																																																																																																												
12	13	14	15	16	17	18																																																																																																																																																																												
19	20	21	22	23	24	25																																																																																																																																																																												
26	27	28	29	30	31																																																																																																																																																																													
S	M	T	W	T	F	S																																																																																																																																																																												
						1																																																																																																																																																																												
2	3	4	5	6	7	8																																																																																																																																																																												
9	10	11	12	13	14	15																																																																																																																																																																												
16	17	18	19	20	21	22																																																																																																																																																																												
23	24	25	26	27	28	29																																																																																																																																																																												
30	31																																																																																																																																																																																	
May	June	July	August																																																																																																																																																																															
<table border="1"> <tr><th>S</th><th>M</th><th>T</th><th>W</th><th>T</th><th>F</th><th>S</th></tr> <tr><td>1</td><td>2</td><td>3</td><td>4</td><td>5</td><td>6</td><td>7</td></tr> <tr><td>8</td><td>9</td><td>10</td><td>11</td><td>12</td><td>13</td><td>14</td></tr> <tr><td>15</td><td>16</td><td>17</td><td>18</td><td>19</td><td>20</td><td>21</td></tr> <tr><td>22</td><td>23</td><td>24</td><td>25</td><td>26</td><td>27</td><td>28</td></tr> <tr><td>29</td><td>30</td><td>31</td><td></td><td></td><td></td><td></td></tr> </table>	S	M	T	W	T	F	S	1	2	3	4	5	6	7	8	9	10	11	12	13	14	15	16	17	18	19	20	21	22	23	24	25	26	27	28	29	30	31					<table border="1"> <tr><th>S</th><th>M</th><th>T</th><th>W</th><th>T</th><th>F</th><th>S</th></tr> <tr><td></td><td></td><td></td><td>1</td><td>2</td><td>3</td><td>4</td></tr> <tr><td>5</td><td>6</td><td>7</td><td>8</td><td>9</td><td>10</td><td>11</td></tr> <tr><td>12</td><td>13</td><td>14</td><td>15</td><td>16</td><td>17</td><td>18</td></tr> <tr><td>19</td><td>20</td><td>21</td><td>22</td><td>23</td><td>24</td><td>25</td></tr> <tr><td>26</td><td>27</td><td>28</td><td>29</td><td>30</td><td></td><td></td></tr> </table>	S	M	T	W	T	F	S				1	2	3	4	5	6	7	8	9	10	11	12	13	14	15	16	17	18	19	20	21	22	23	24	25	26	27	28	29	30			<table border="1"> <tr><th>S</th><th>M</th><th>T</th><th>W</th><th>T</th><th>F</th><th>S</th></tr> <tr><td>31</td><td></td><td></td><td></td><td></td><td></td><td>1</td></tr> <tr><td>2</td><td>3</td><td>4</td><td>5</td><td>6</td><td>7</td><td>8</td></tr> <tr><td>9</td><td>10</td><td>11</td><td>12</td><td>13</td><td>14</td><td>15</td></tr> <tr><td>16</td><td>17</td><td>18</td><td>19</td><td>20</td><td>21</td><td>22</td></tr> <tr><td>23</td><td>24</td><td>25</td><td>26</td><td>27</td><td>28</td><td>29</td></tr> <tr><td>30</td><td></td><td></td><td></td><td></td><td></td><td></td></tr> </table>	S	M	T	W	T	F	S	31						1	2	3	4	5	6	7	8	9	10	11	12	13	14	15	16	17	18	19	20	21	22	23	24	25	26	27	28	29	30							<table border="1"> <tr><th>S</th><th>M</th><th>T</th><th>W</th><th>T</th><th>F</th><th>S</th></tr> <tr><td></td><td>1</td><td>2</td><td>3</td><td>4</td><td>5</td><td>6</td></tr> <tr><td>7</td><td>8</td><td>9</td><td>10</td><td>11</td><td>12</td><td>13</td></tr> <tr><td>14</td><td>15</td><td>16</td><td>17</td><td>18</td><td>19</td><td>20</td></tr> <tr><td>21</td><td>22</td><td>23</td><td>24</td><td>25</td><td>26</td><td>27</td></tr> <tr><td>28</td><td>29</td><td>30</td><td>31</td><td></td><td></td><td></td></tr> </table>	S	M	T	W	T	F	S		1	2	3	4	5	6	7	8	9	10	11	12	13	14	15	16	17	18	19	20	21	22	23	24	25	26	27	28	29	30	31			
S	M	T	W	T	F	S																																																																																																																																																																												
1	2	3	4	5	6	7																																																																																																																																																																												
8	9	10	11	12	13	14																																																																																																																																																																												
15	16	17	18	19	20	21																																																																																																																																																																												
22	23	24	25	26	27	28																																																																																																																																																																												
29	30	31																																																																																																																																																																																
S	M	T	W	T	F	S																																																																																																																																																																												
			1	2	3	4																																																																																																																																																																												
5	6	7	8	9	10	11																																																																																																																																																																												
12	13	14	15	16	17	18																																																																																																																																																																												
19	20	21	22	23	24	25																																																																																																																																																																												
26	27	28	29	30																																																																																																																																																																														
S	M	T	W	T	F	S																																																																																																																																																																												
31						1																																																																																																																																																																												
2	3	4	5	6	7	8																																																																																																																																																																												
9	10	11	12	13	14	15																																																																																																																																																																												
16	17	18	19	20	21	22																																																																																																																																																																												
23	24	25	26	27	28	29																																																																																																																																																																												
30																																																																																																																																																																																		
S	M	T	W	T	F	S																																																																																																																																																																												
	1	2	3	4	5	6																																																																																																																																																																												
7	8	9	10	11	12	13																																																																																																																																																																												
14	15	16	17	18	19	20																																																																																																																																																																												
21	22	23	24	25	26	27																																																																																																																																																																												
28	29	30	31																																																																																																																																																																															
September	October	November	December																																																																																																																																																																															
<table border="1"> <tr><th>S</th><th>M</th><th>T</th><th>W</th><th>T</th><th>F</th><th>S</th></tr> <tr><td></td><td></td><td></td><td></td><td>1</td><td>2</td><td>3</td></tr> <tr><td>4</td><td>5</td><td>6</td><td>7</td><td>8</td><td>9</td><td>10</td></tr> <tr><td>11</td><td>12</td><td>13</td><td>14</td><td>15</td><td>16</td><td>17</td></tr> <tr><td>18</td><td>19</td><td>20</td><td>21</td><td>22</td><td>23</td><td>24</td></tr> <tr><td>25</td><td>26</td><td>27</td><td>28</td><td>29</td><td>30</td><td></td></tr> </table>	S	M	T	W	T	F	S					1	2	3	4	5	6	7	8	9	10	11	12	13	14	15	16	17	18	19	20	21	22	23	24	25	26	27	28	29	30		<table border="1"> <tr><th>S</th><th>M</th><th>T</th><th>W</th><th>T</th><th>F</th><th>S</th></tr> <tr><td>30</td><td>31</td><td></td><td></td><td></td><td></td><td>1</td></tr> <tr><td>2</td><td>3</td><td>4</td><td>5</td><td>6</td><td>7</td><td>8</td></tr> <tr><td>9</td><td>10</td><td>11</td><td>12</td><td>13</td><td>14</td><td>15</td></tr> <tr><td>16</td><td>17</td><td>18</td><td>19</td><td>20</td><td>21</td><td>22</td></tr> <tr><td>23</td><td>24</td><td>25</td><td>26</td><td>27</td><td>28</td><td>29</td></tr> </table>	S	M	T	W	T	F	S	30	31					1	2	3	4	5	6	7	8	9	10	11	12	13	14	15	16	17	18	19	20	21	22	23	24	25	26	27	28	29	<table border="1"> <tr><th>S</th><th>M</th><th>T</th><th>W</th><th>T</th><th>F</th><th>S</th></tr> <tr><td></td><td></td><td></td><td>1</td><td>2</td><td>3</td><td>4</td></tr> <tr><td>5</td><td>6</td><td>7</td><td>8</td><td>9</td><td>10</td><td>11</td></tr> <tr><td>12</td><td>13</td><td>14</td><td>15</td><td>16</td><td>17</td><td>18</td></tr> <tr><td>19</td><td>20</td><td>21</td><td>22</td><td>23</td><td>24</td><td>25</td></tr> <tr><td>26</td><td>27</td><td>28</td><td>29</td><td>30</td><td></td><td></td></tr> </table>	S	M	T	W	T	F	S				1	2	3	4	5	6	7	8	9	10	11	12	13	14	15	16	17	18	19	20	21	22	23	24	25	26	27	28	29	30			<table border="1"> <tr><th>S</th><th>M</th><th>T</th><th>W</th><th>T</th><th>F</th><th>S</th></tr> <tr><td></td><td></td><td></td><td></td><td></td><td></td><td>1</td></tr> <tr><td>2</td><td>3</td><td>4</td><td>5</td><td>6</td><td>7</td><td>8</td></tr> <tr><td>9</td><td>10</td><td>11</td><td>12</td><td>13</td><td>14</td><td>15</td></tr> <tr><td>16</td><td>17</td><td>18</td><td>19</td><td>20</td><td>21</td><td>22</td></tr> <tr><td>23</td><td>24</td><td>25</td><td>26</td><td>27</td><td>28</td><td>29</td></tr> <tr><td>30</td><td>31</td><td></td><td></td><td></td><td></td><td></td></tr> </table>	S	M	T	W	T	F	S							1	2	3	4	5	6	7	8	9	10	11	12	13	14	15	16	17	18	19	20	21	22	23	24	25	26	27	28	29	30	31					
S	M	T	W	T	F	S																																																																																																																																																																												
				1	2	3																																																																																																																																																																												
4	5	6	7	8	9	10																																																																																																																																																																												
11	12	13	14	15	16	17																																																																																																																																																																												
18	19	20	21	22	23	24																																																																																																																																																																												
25	26	27	28	29	30																																																																																																																																																																													
S	M	T	W	T	F	S																																																																																																																																																																												
30	31					1																																																																																																																																																																												
2	3	4	5	6	7	8																																																																																																																																																																												
9	10	11	12	13	14	15																																																																																																																																																																												
16	17	18	19	20	21	22																																																																																																																																																																												
23	24	25	26	27	28	29																																																																																																																																																																												
S	M	T	W	T	F	S																																																																																																																																																																												
			1	2	3	4																																																																																																																																																																												
5	6	7	8	9	10	11																																																																																																																																																																												
12	13	14	15	16	17	18																																																																																																																																																																												
19	20	21	22	23	24	25																																																																																																																																																																												
26	27	28	29	30																																																																																																																																																																														
S	M	T	W	T	F	S																																																																																																																																																																												
						1																																																																																																																																																																												
2	3	4	5	6	7	8																																																																																																																																																																												
9	10	11	12	13	14	15																																																																																																																																																																												
16	17	18	19	20	21	22																																																																																																																																																																												
23	24	25	26	27	28	29																																																																																																																																																																												
30	31																																																																																																																																																																																	

Key dates

- Term start and end dates***
 - Term 1 (Eastern) – 28 Jan to 8 Apr 2022
 - Term 1 (Western) – 4 Feb to 8 Apr 2022
 - Term 2 – 26 Apr to 1 July 2022
 - Term 3 – 18 July to 23 Sept 2022
 - Term 4 – 10 Oct to 20 Dec 2022
- School development days**
 - Term 1 (Eastern) – 28 Jan and 5 Jan 2022
 - Term 1 (Western) – 4 Feb and 7 Feb 2022
 - Term 2, 3 and 4 – 26 April, 18 July and 20 Dec 2022
- School vacation dates 2022**
 - Summer (Eastern) – 20 Dec 2021 to 27 Jan 2022
 - Summer (Western) – 20 Dec 2021 to 3 Feb 2022
 - Autumn – 1 Apr to 22 Apr 2022
 - Winter – 4 July to 15 July 2022
 - Spring – 26 Sept to 7 Oct 2022
 - Summer (Eastern) – 21 Dec 2022 to 26 Jan 2023
 - Summer (Western) – 21 Dec 2022 to 2 Feb 2023
- Education Week**
 - 1-5 August 2022
- Exam dates**
 - Selective high school placement test – 10 Mar 2022
 - NAPLAN online test window – 10 to 20 May 2022
 - Opportunity class placement test – 28 July 2022
- Public holidays**



Scan me for practical school tips!

To help your child get the most out of their school year and to explore our resources, check out our back to school hub at education.nsw.gov.au/back-to-school

School zone speed limits apply on all school days, including school development days.

* Check with your school as starting and finishing dates may change.